

ABOUT US



Welcome to Aayush Windows, your trusted partner in premium aluminum and UPVC windows. Established in 2017 in Pune, Maharashtra, we specialize in crafting high-quality, durable, and aesthetically designed windows that enhance both residential and commercial spaces.

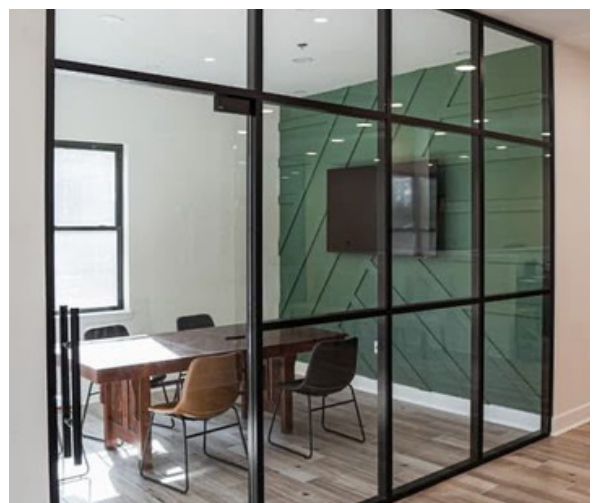
At Aayush Windows, we are committed to innovation, precision, and sustainability. Using state-of-the-art German machinery and advanced technology, we manufacture energy-efficient, soundproof, and weather-resistant windows that offer security, comfort, and style.

Why Choose Aayush Windows?

- ✓ Expert Craftsmanship – High-quality Aluminum & UPVC windows tailored to perfection
- ✓ Wide Product Range – From sliding, casement, fixed, and French windows to custom solutions
- ✓ Advanced Technology – Precision-engineered products ensuring durability and smooth operation
- ✓ Sustainability Focused – Eco-friendly materials with UV resistance and energy-saving properties
- ✓ Customer-Centric Approach – Customized solutions to match your design, security, and functional needs

With a strong presence in the market, we continue to serve architects, builders, and homeowners with innovative and stylish window solutions. Whether you're looking for modern aesthetics, energy efficiency, or long-lasting durability, Aayush Windows is here to bring your vision to life.

💬 Let's build brighter, better spaces together!



Disclaimer: Images shown are for representation purpose only

SLIMLINE SLIDING SERIES

Enhance the elegance of your home with slim-profile sliding windows that offer a sleek and modern look. Designed for luxury residences, bungalows, and premium apartments, these windows feature an advanced concealed locking system for seamless security.

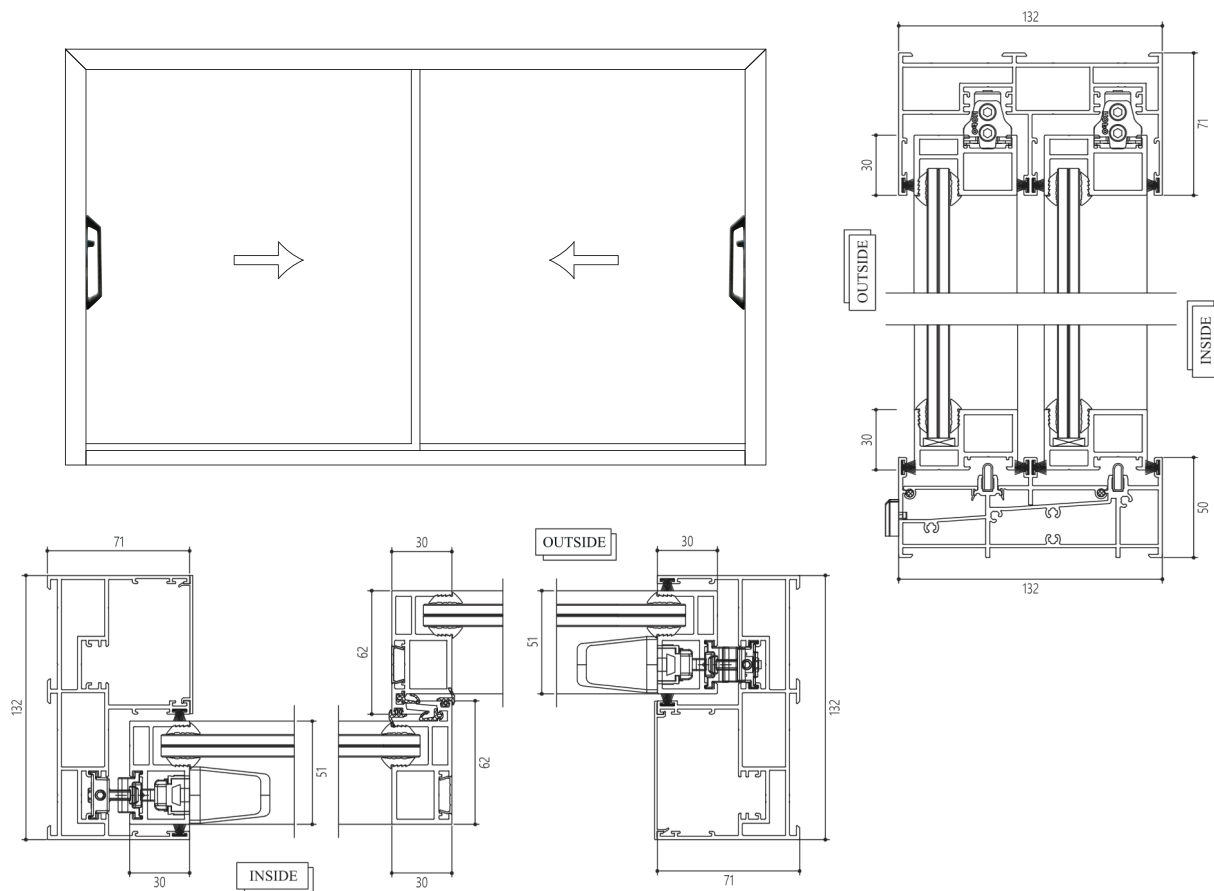
Built with precision engineering, they ensure airtight interlocking, effectively blocking dust, noise, and water, while maintaining superior functionality and durability. With no visible hardware from the inside, these windows provide a minimalist, sophisticated aesthetic.

Tailored to match modern architectural styles, our slim sliding windows come in a variety of customizable designs, offering both beauty and high performance to complement your space perfectly.



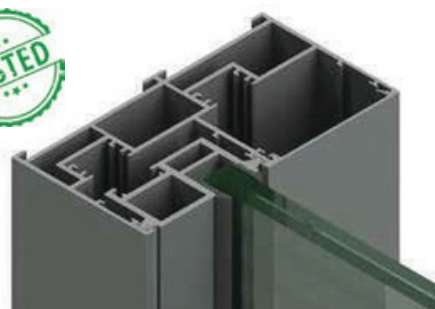
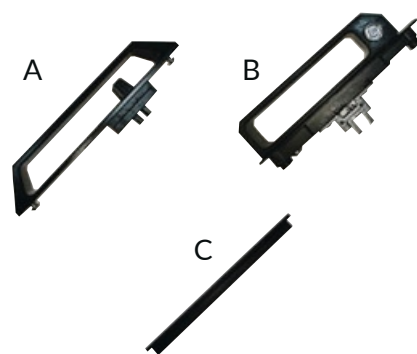
Disclaimer: Images shown are for representation purpose only

SLIMLINE SLIDING SERIES



Technical Specification

- ✓ Available Configurations: 2-track and 3-track frame options
- ✓ Maximum Shutter Size: 1500mm x 3000mm
- ✓ Locking System: Multiple locking points for enhanced security
- ✓ Load Capacity: Supports up to 300kg per shutter
- ✓ Wind Load Resistance: Up to 2 Kpa, ensuring durability in extreme conditions
- ✓ Glass Thickness: Supports up to 15.52mm for superior insulation
- ✓ Slim Profile: Ultra-narrow leaf profile on all sides for a sleek appearance
- ✓ Adjustable Roller: Height adjustment range of +5mm for smooth operation
- ✓ Hardware Options:
 - Multi-point lock pull handle
 - 'L' Multi-point pull handle



SLIMLINE CASEMENT WINDOWS

Designed for bungalows and premium apartments, these sleek and stylish casement windows feature an advanced concealed locking system with a soft wool pile for enhanced sealing. They provide excellent air circulation, making any space feel fresh and comfortable.

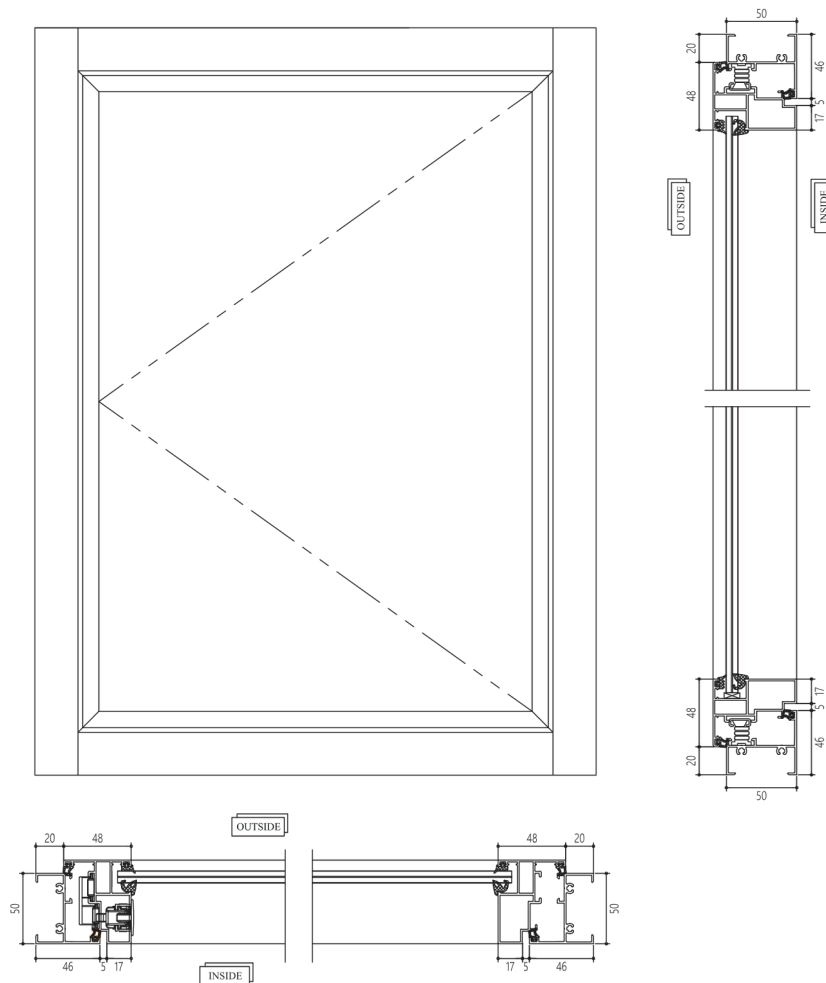
With their modern, elegant design, these windows add a sophisticated touch to your interiors. Unlike traditional large-opening windows, these casement windows ensure smooth inward or outward operation, allowing for uninterrupted views and optimal ventilation.

Built for strength and durability, they offer flawless functionality, noise reduction, dust prevention, and superior protection against wind and rain, making them a perfect blend of style and performance.



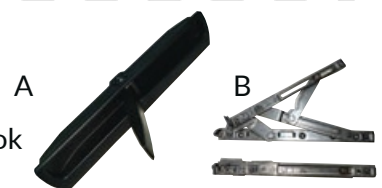
Disclaimer: Images shown are for representation purpose only

SLIMO Casement Series



Technical Specification

- ✓ Concealed Handle Design: No visible fittings from the inside for a sleek look
- ✓ Slim Yet Strong Profile: Provides enhanced strength while maintaining a narrow frame
- ✓ Wider & Clearer View: Slim profile maximizes ventilation and natural light
- ✓ High-Security Hinges: Friction hinges with a load-bearing capacity of up to 80kg
- ✓ Advanced Sealing System: EPDM and foam gasket combination for superior air, noise, and water insulation
- ✓ Smooth Operation: Special rotary transmission hardware for effortless handling
- ✓ Integrated Mosquito Net: Added protection from insects without compromising aesthetics
- ✓ Hardware Options:
 - Multi-point lock pull handle
 - High-durability friction hinges



French Windows

Classic elegance meets modern functionality with our premium French windows, designed to bring in ample natural light and fresh air while adding a touch of sophistication to your space. With their large glass panels, these windows seamlessly connect your indoors to the outdoors, enhancing the beauty of your home.

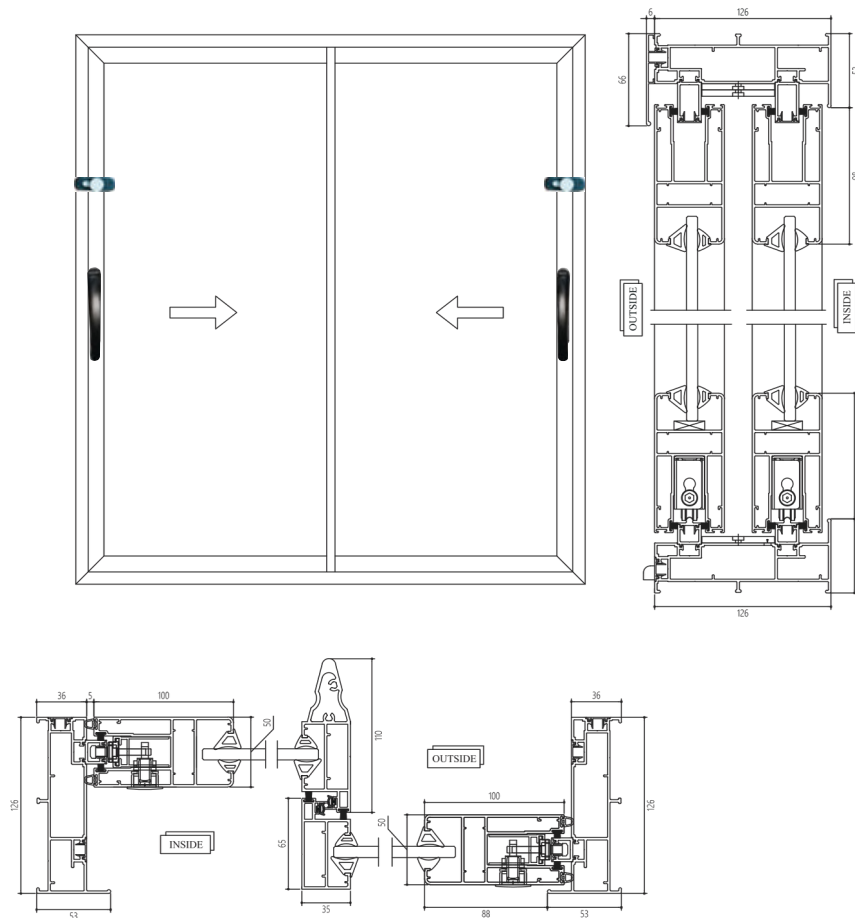
Built with high-quality UPVC or aluminum, these windows provide superior insulation, noise reduction, and weather resistance. Their durable construction and smooth operation make them a perfect choice for luxury homes, bungalows, and premium apartments.

Whether you want panoramic views, excellent ventilation, or a timeless aesthetic, our French windows offer the perfect blend of style and performance.



Disclaimer: Images shown are for representation purpose only

50mm Sliding Series

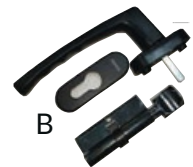


Technical Specification

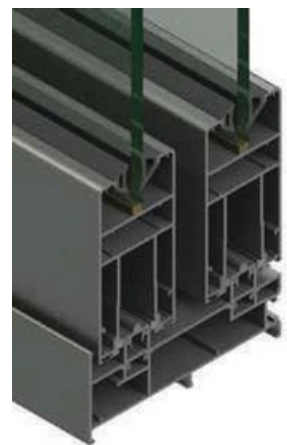
- ✓ **Frame Options:** Available in 2-track, 2.5-track, and 3-track configurations
- ✓ **Maximum Shutter Size:** Supports large panel designs for uninterrupted views
- ✓ **Load Capacity:** Durable frame structure with a high weight-bearing capacity
- ✓ **Smooth Operation:** Nylon/polyamide rollers tested for high-load performance
- ✓ **Wind & Water Resistance:** Specially designed for Indian monsoon conditions
- ✓ **Glass Compatibility:** Supports single or double-glazed glass (5mm - 19mm thickness)
- ✓ **Sealing System:** Siliconized EPDM gaskets for superior air and water tightness
- ✓ **Enhanced Security:** Multipoint locking system with high-durability aluminum track
- ✓ **Mosquito Protection:** Integrated bug mesh option for a comfortable living environment



A



B

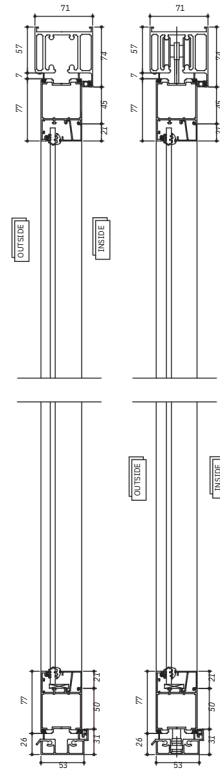


SLIDING FOLDING

Add a hint of chic to your space with the sliding folding door, a versatile and exible door system. It is a unique, impressive system that can unite internal and external areas, creating a unique living and social space. Suitable for residential applications, the system also ensures plenty of ventilation and natural light. The doors open both ways, in and out, giving you a continual supply of light and fresh air.

This system is a great alternative to sliding doors to open up an entire wall to make the most of a beautiful view or to bring a garden into the home. A unique feature of these doors is that they come with an extensive range of colours for you to choose from. You can now pick a door that compliments the decor of your home





-



SLIM SLIDING SERIES

Upgrade your space with our Slim Sliding Series, designed for modern homes, luxury apartments, and commercial spaces. Featuring a sleek and minimalistic profile, these windows provide unobstructed views, maximum natural light, and seamless indoor-outdoor connectivity.

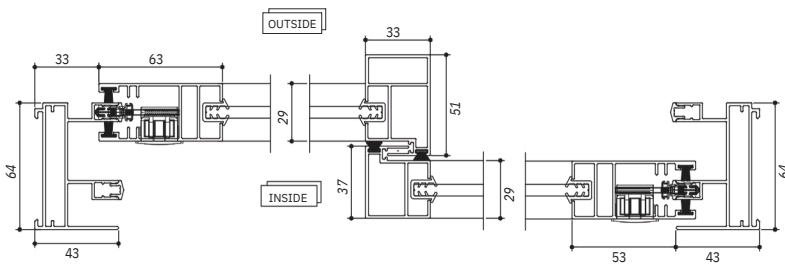
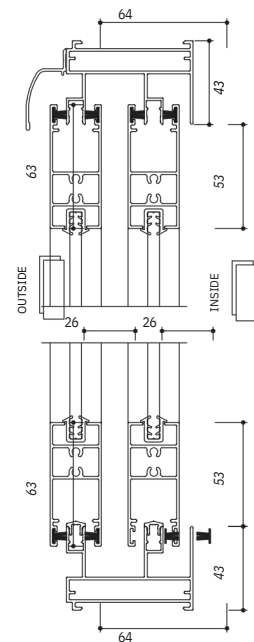
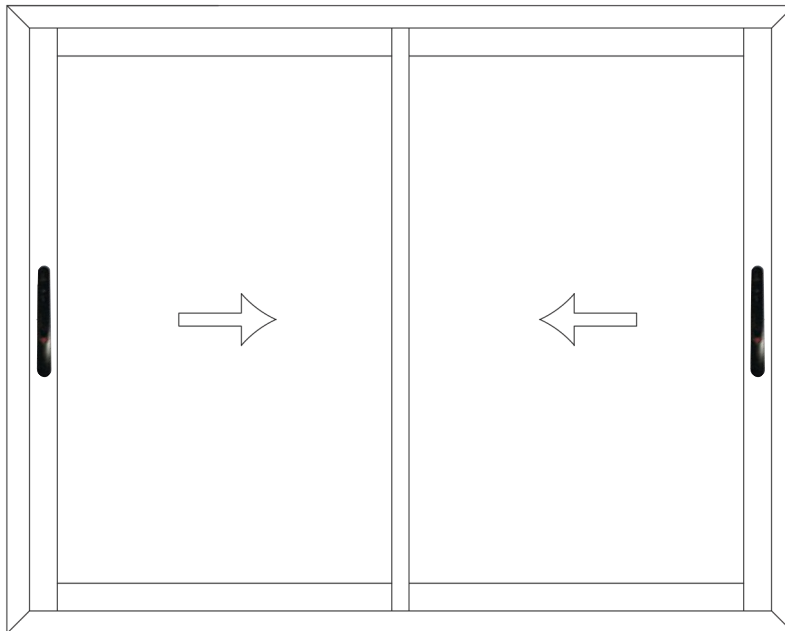
Built with high-strength aluminum or UPVC, the slim-profile design offers smooth operation, noise reduction, and superior weather resistance. The concealed locking system enhances security while maintaining a sleek, frameless appearance from the inside.

Perfectly crafted for those who desire sophisticated aesthetics, our Slim Sliding Series combines elegance, durability, and modern engineering for an exceptional living experience.



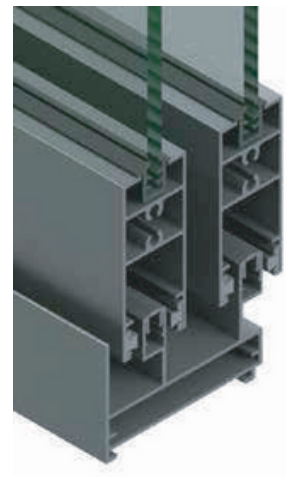
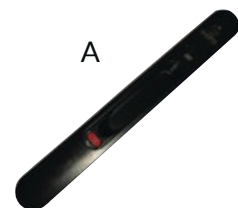
Disclaimer: Images shown are for representation purpose only

30X63MM Slim Sliding Series

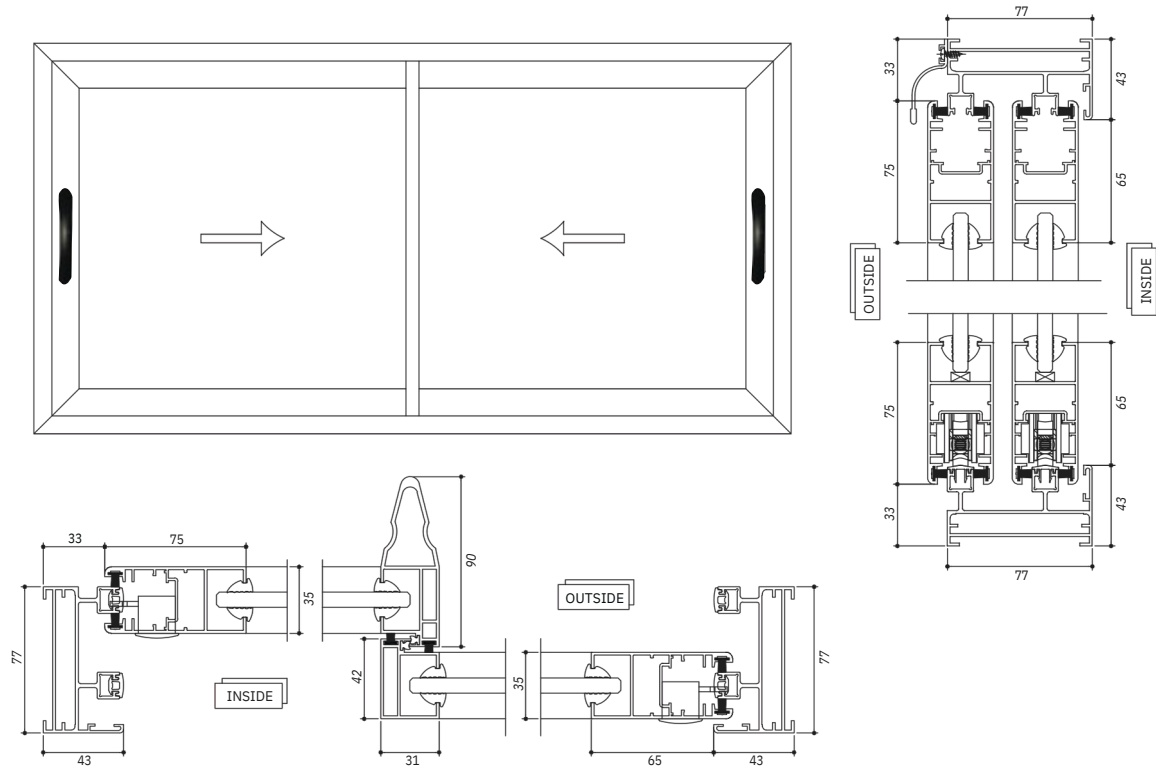


Technical Specification

- ◆ Physically tested system as per ASTM & AAMA standards
- ◆ Maximum Shutter Dimensions 1000mmx 2200mm
- ◆ Available in 2 track and 3 track Single Glass options 5mm,
- ◆ 6mm and 8mm Combination Frame option available All
- ◆ Hardware European make Specially designed for High rise
- ◆ and Affordable segment Multi-point locking available
- ◆ Hardware Options :
- ◆ A) Concealed Lock

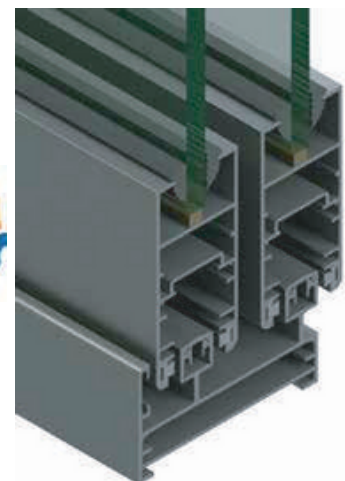


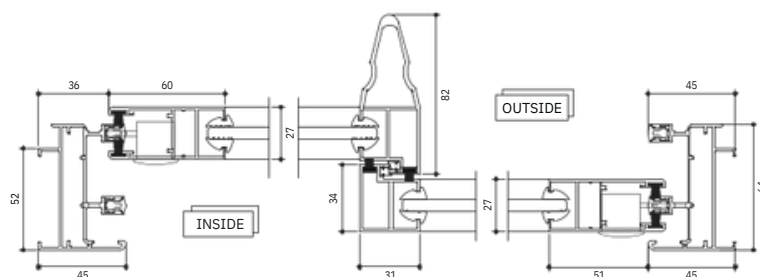
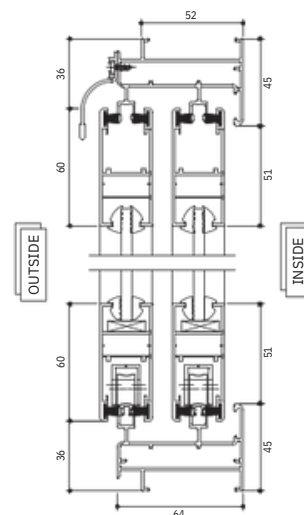
Aayush 35x75MM Sliding Slim Series



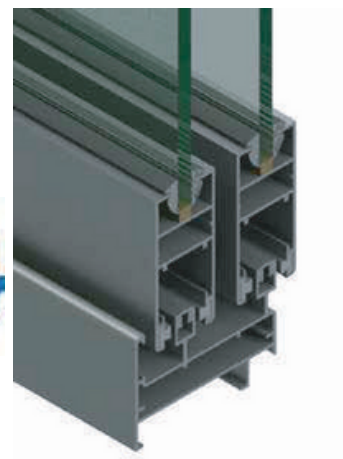
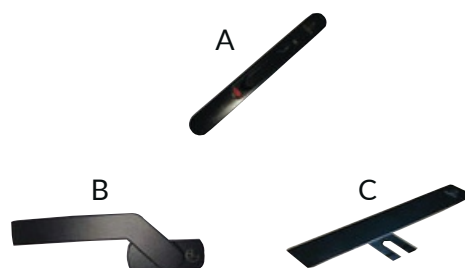
Technical Specification

- ◆ Maximum Shutter Dimension 1500mm x 2400mm
- ◆ Maximum Glass thickness 22mm
- ◆ Available in 2 track, 3 track and 4track frame
- ◆ Single or Double insulated Glass available
- ◆ Multi point lock
- ◆ KPa DG Handle shutter
- ◆ Flymesh Integration
- ◆ Slim Interlock Re-inforcement upto 1.5 KPa
- ◆ Hardware Options : A) Concealed Lock Automatic
- ◆ B) Short Neck Handle C) Metro Handle

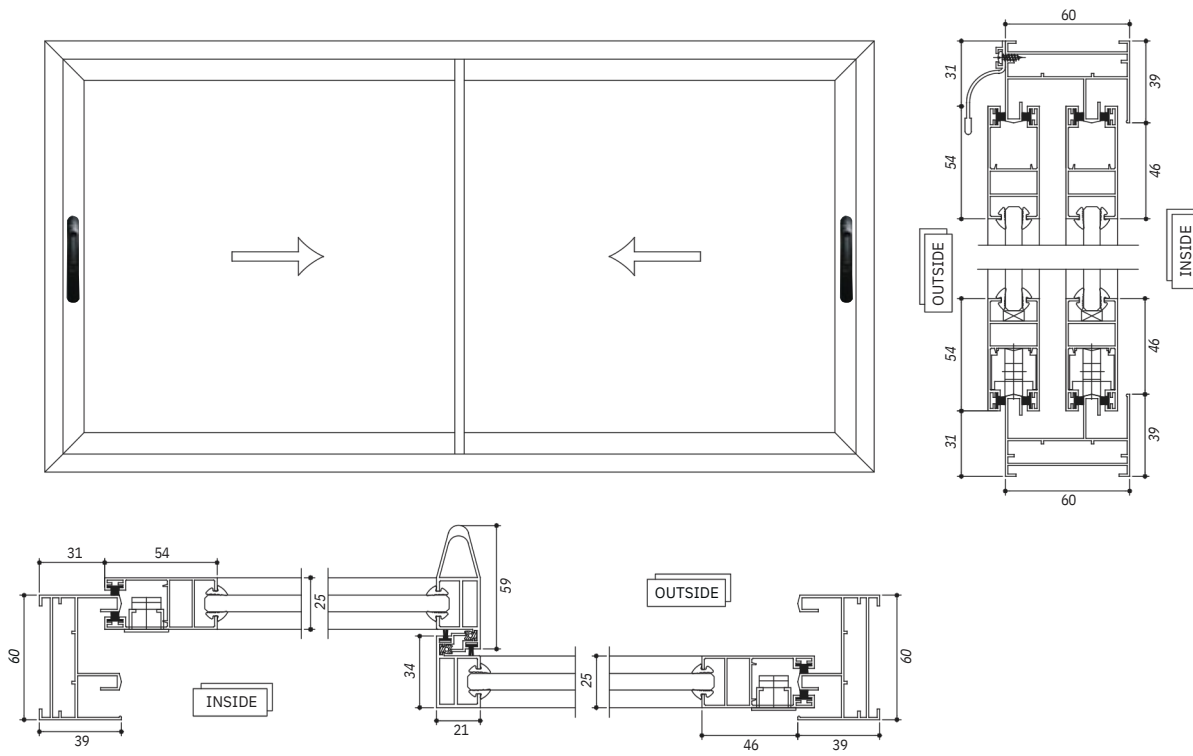




- ◆ Maximum Shutter Dimensions 1200mm x 2200mm
- ◆ Maximum Glass Thickness 18mm
- ◆ Available in 2 track, 3 track and 4 track frame
- ◆ Single or Double insulated Glass available
- ◆ Multi point lock
- ◆ KPa DG Handle shutter
- ◆ Flymesh Integration
- ◆ Hardware Options : A) Concealed Lock Automatic
- ◆ B) Short Neck Handle C) Metro Handle

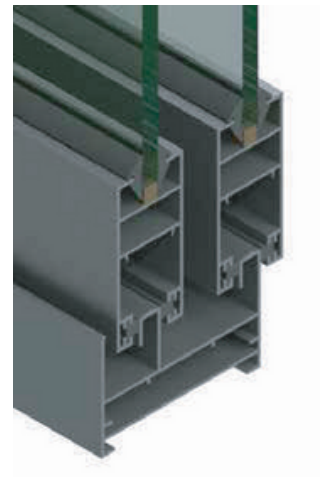
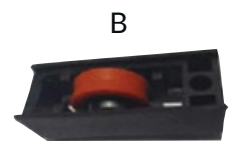
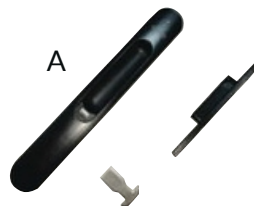


25x54MM Sliding Slim Series

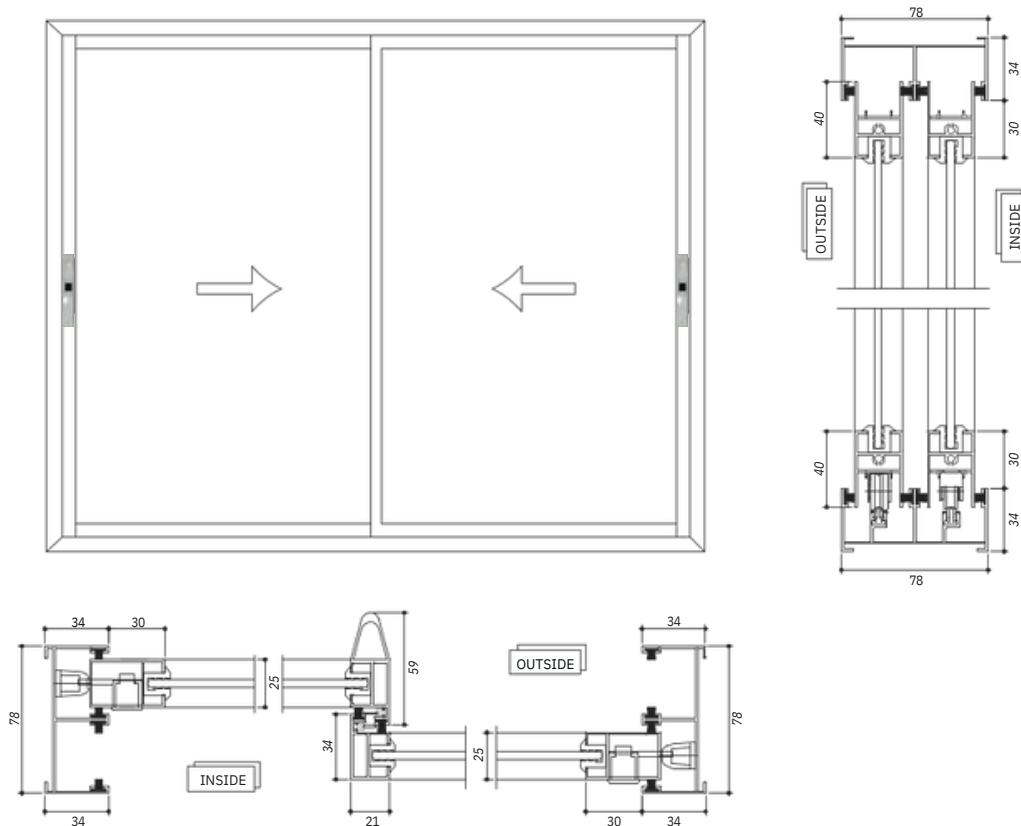


Technical Specification

- ◆ Maximum Shutter Dimensions 900mm x 1800mm
- ◆ Maximum Glass Thickness 5mm/6mm
- ◆ Available in 2 track , 3 track & 4 track
- ◆ Light weight sections
- ◆ Hardware compatible with Aluminium sections
- ◆ Hardware Options : A) Concealed Lock Automatic
B) Bearing

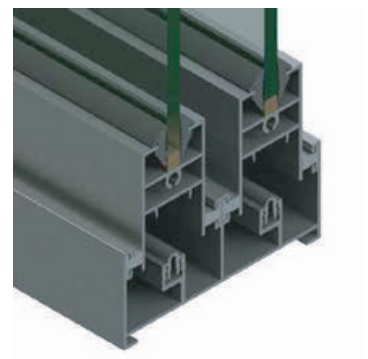


Ultra Value Window (UVW)



Technical Specification

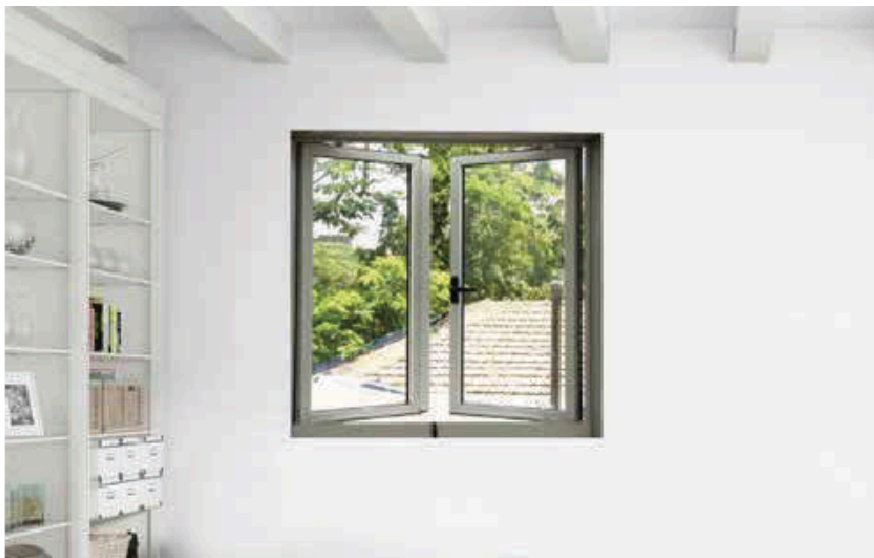
- ◆ Sleeker Design
- ◆ Maximum Shutter Dimensions 900mmx1800mm
- ◆ Available in 2 track and 3 track
- ◆ Wind Load capacity upto 1.5Kpa.
- ◆ Optimum weight designed profiles
- ◆ Hardware design compatible with aluminium sections
- ◆ Concealed shutter option available
- ◆ Hardware Options : A) Concealed Lock
B) Bearing



CASEMENT WINDOWS AND DOORS

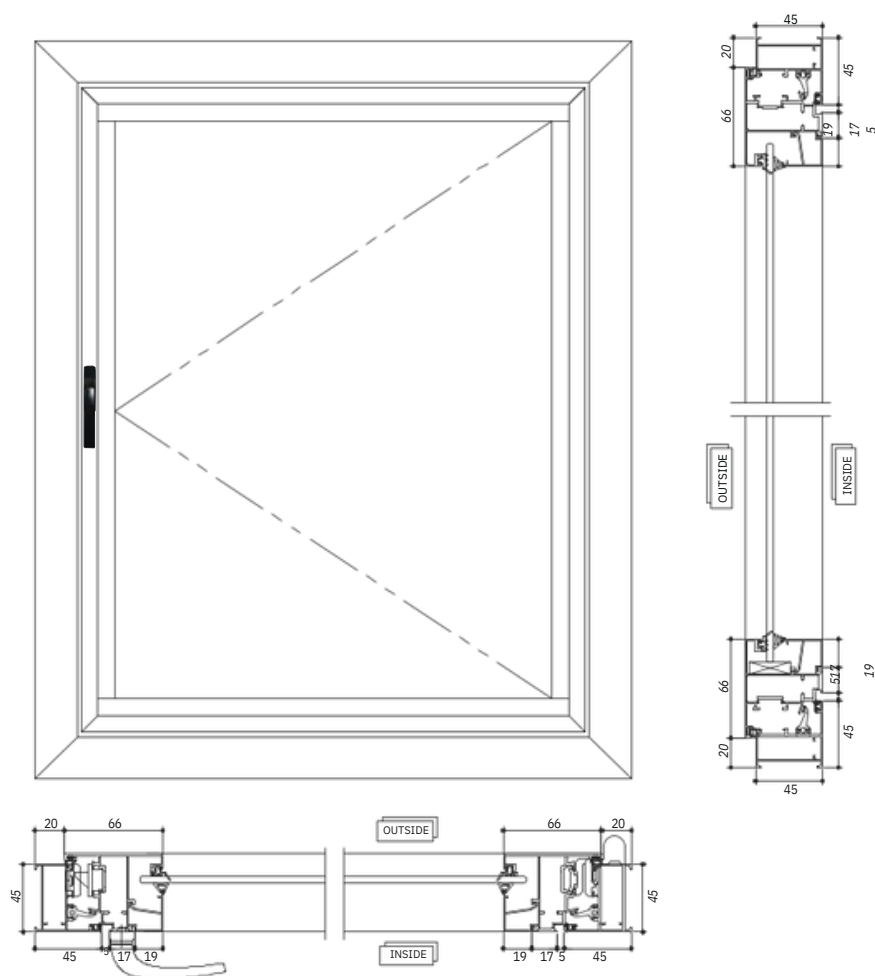
Our Casement Windows offer the perfect combination of style, functionality, and durability. Designed with high-quality aluminum or UPVC, these windows are hinged on the side and open inward or outward, providing excellent ventilation and unobstructed views.

Equipped with multipoint locking systems and high-security friction hinges, they ensure smooth operation, noise insulation, and enhanced protection against dust, rain, and wind. With their sleek, modern design and customizable options, casement windows add elegance and efficiency to any space.



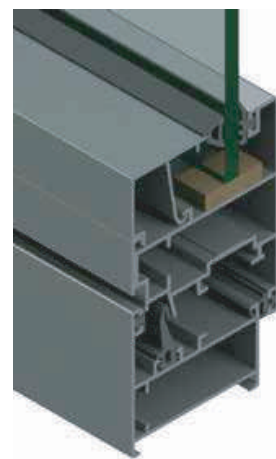
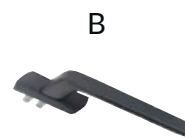
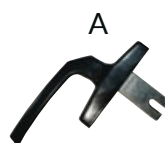
Disclaimer: Images shown are for representation purpose only

52EG Casement Window

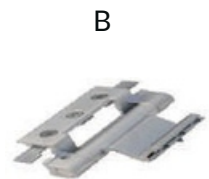


Technical Specification

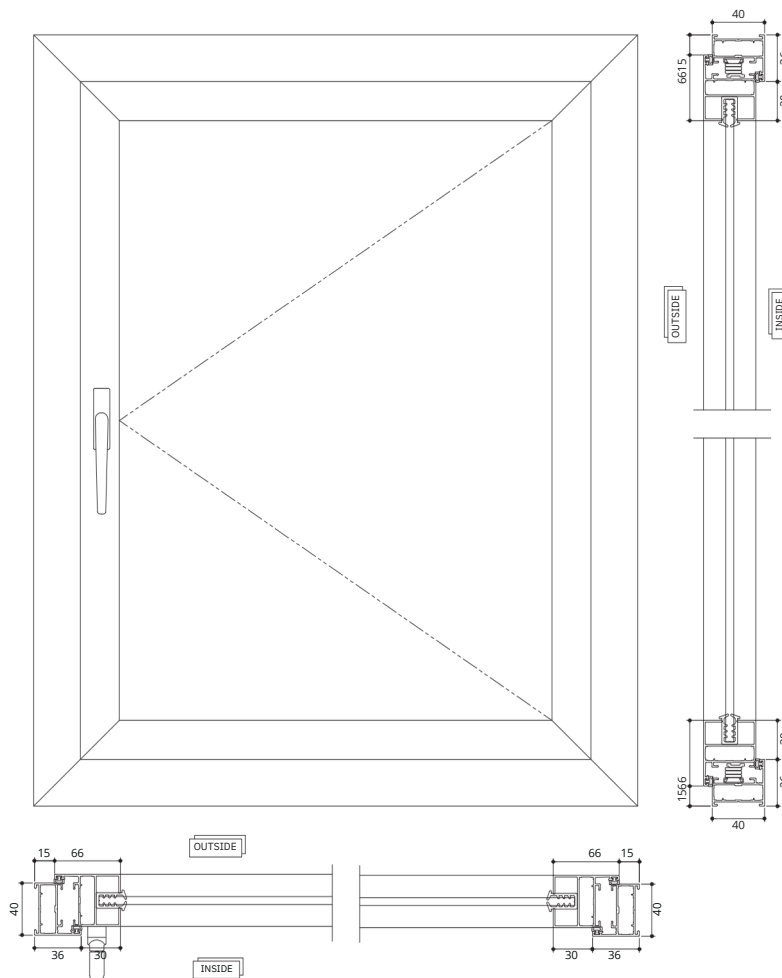
- ◆ Maximum Shutter Dimensions 900mm x1800mm
- ◆ Two Point locking available
- ◆ Options for Single/ Double shutter and combinations of openable and fixed
- ◆ Hair Line corner joints possible with the help of spring loaded corner cleat
- ◆ European make special butt hinges for higher load carrying capacity
- ◆ Hardware Options : A) Multi Point Lock OP-1
B) Multi Point Lock OP-2 C) Friction Hinges



- ◆ Maximum Shutter Dimensions 900mm x3000mm
- ◆ Maximum Glass Thickness 24mm
- ◆ Two point locking available
- ◆ Single/ Double Shutter available
- ◆ Single/Double Glass available
- ◆ Possibility to fit Mortise lock with cylinder and spring loaded handle for doors
- ◆ Profiles compatible for Euro Groove Hardware
- ◆ Special heavy and light duty butt hinges for carrying capacity
- ◆ Hardware Options : A) Mortise Lock
B) Butt Hinges

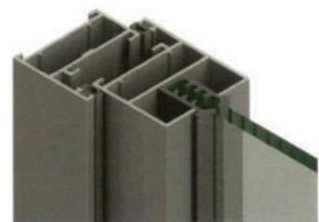
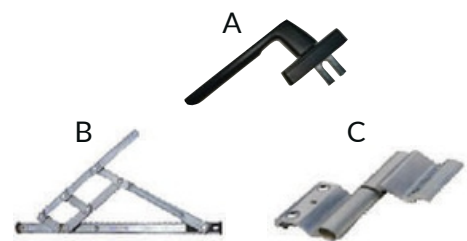


40MM Casement Window w/o Beading

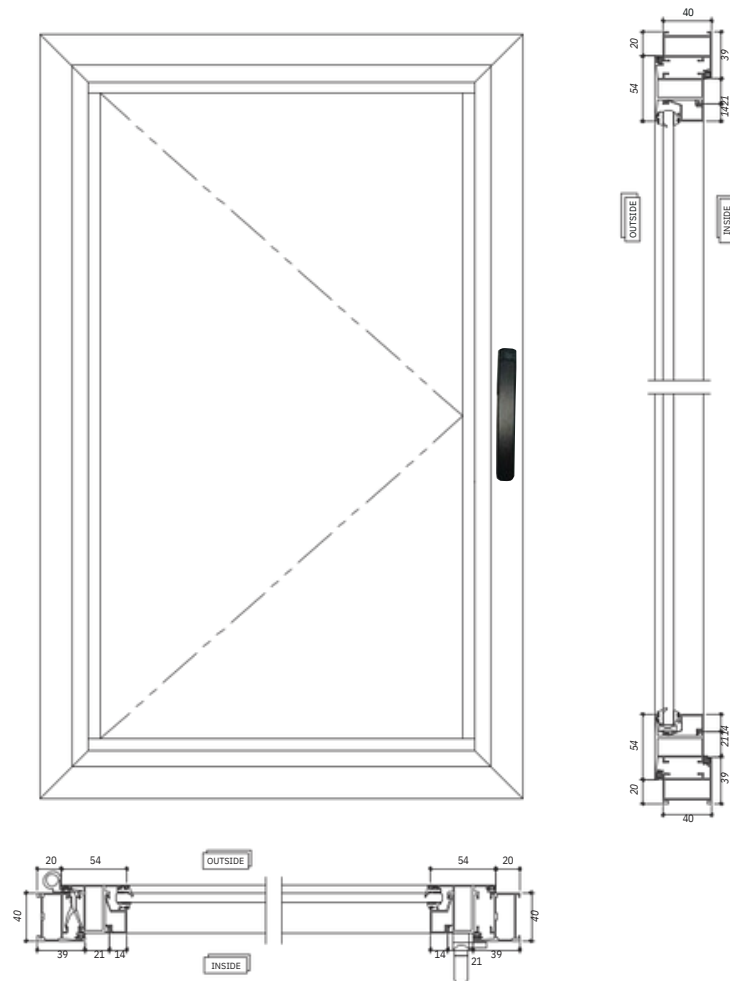


Technical Specification

- ◆ Maximum Shutter Dimensions 800mm x1600mm
- ◆ Two Point locking available
- ◆ Options for Single/Double shutter and combinations of openable and fixed
- ◆ Hair Line corner joints possible with the help of spring loaded corner cleat
- ◆ Bigger sections for transom and bottom cill available
- ◆ Profiles compatible for Euro Groove Hardware
- ◆ European make special butt hinges for higher load carrying capacity
- ◆ Hardware Options : A) Multi Point Lock B) Friction Hinges C) Butt Hinges

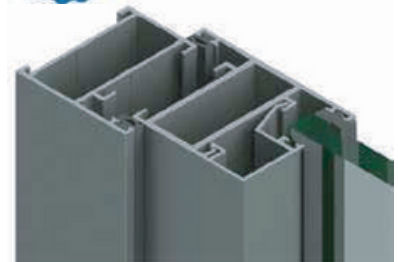
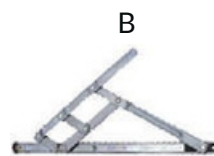
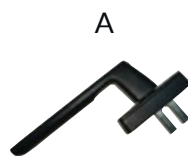


40MM Casement Window

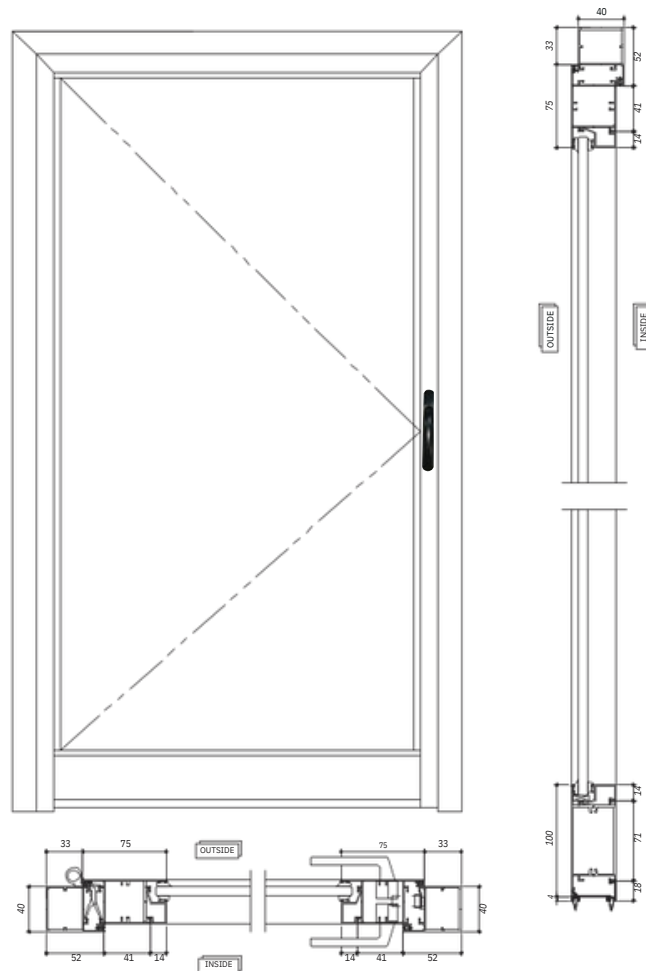


Technical Specification

- ◆ Maximum Shutter Dimensions 800mm x1600mm
- ◆ Two Point locking available
- ◆ Options for Single/ Double shutter and combinations of openable and fixed
- ◆ Hair Line corner joints possible with the help of spring loaded corner cleat
- ◆ Bigger sections for transom and bottom cill available
- ◆ Profiles compatible for Euro Groove Hardware
- ◆ European make special butt hinges for higher load carrying capacity
- ◆ Hardware Options : A) Multi Point Lock B) Friction Hinges C) Butt Hinges

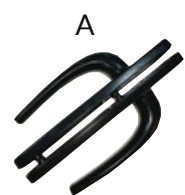


40MM Door

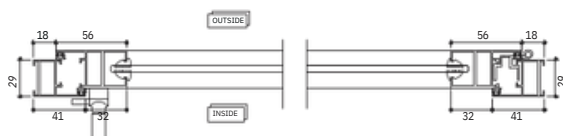
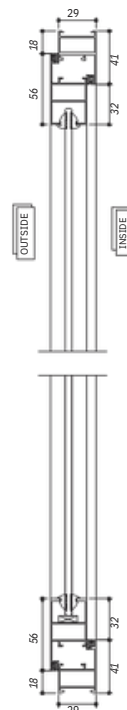
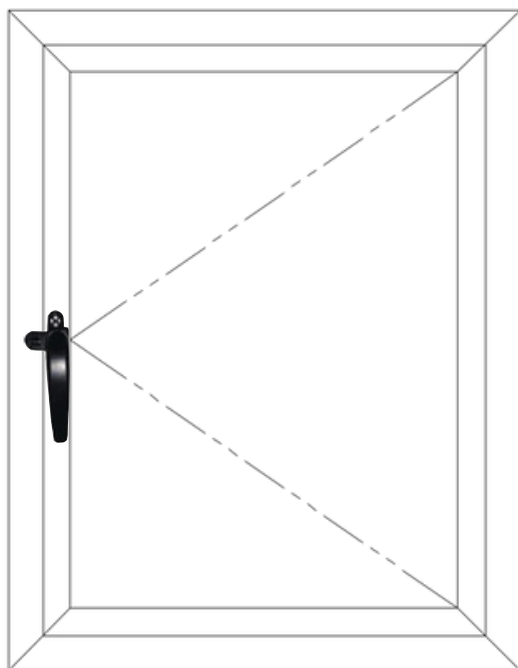


Technical Specification

- ◆ Maximum Shutter Dimensions 900mm x2200mm
- ◆ Two Point locking available
- ◆ Options for Single/ Double shutter and combinations of openable and fixed
- ◆ Hair Line corner joints possible with the help of spring loaded corner cleat
- ◆ Possibility to fit Mortise lock with cylinder and spring loaded handle for doors
- ◆ European make special butt hinges for higher load carrying capacity
- ◆ Hardware Options : A) Mortise Lock

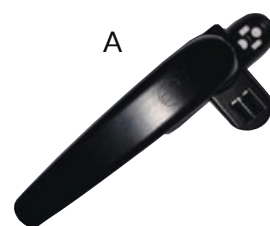


29mm Casement Window



Technical Specification

- ◆ Maximum Shutter Dimensions 750mm x1200mm
- ◆ Maximum Glass Thickness 6mm Hardware
- ◆ combination available with single point handle and friction hinges
- ◆ Ideal to be used as bathroom windows
- ◆ Hardware Options : A) Single Point Lock



TILT & TURN WINDOWS

The Tilt & Turn windows are very versatile and practical, as they can be opened in two ways. When tilted, the window can open inwards providing light, rain protection and ventilation. When turned, the window can act as casement windows, swinging their full glass area open. This unique feature not only adds to the aesthetic appeal but also to the usability.

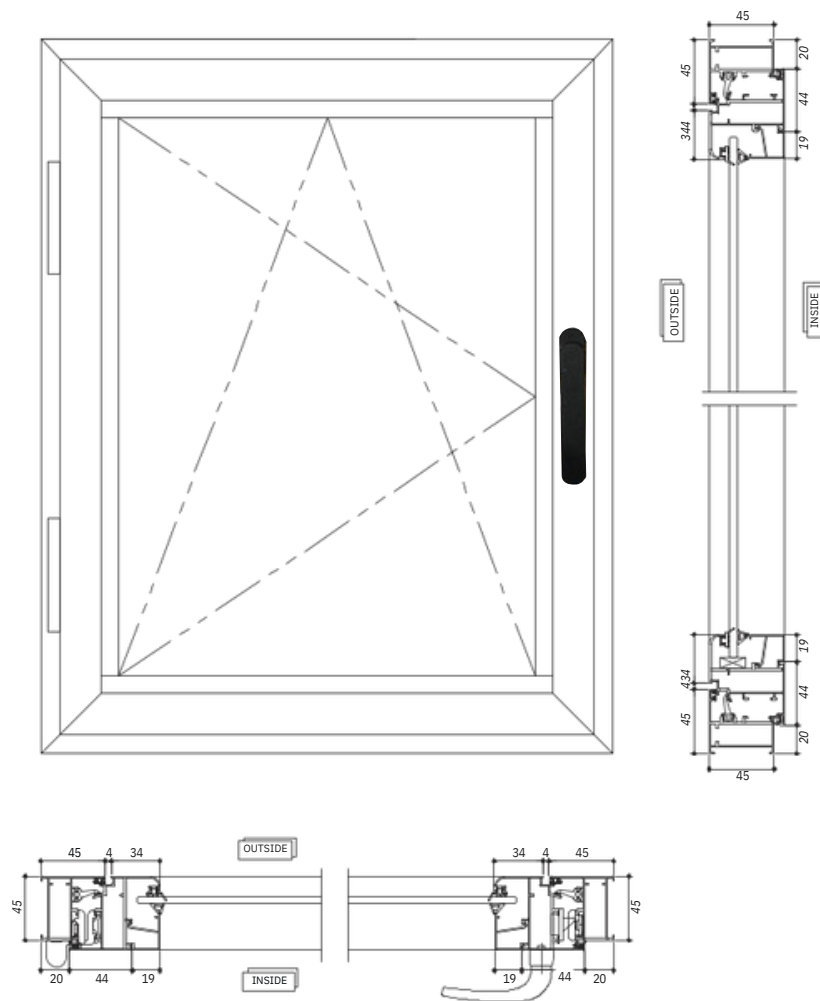
While these windows are extremely stylish and flexible contemporary looking, they also offer a great deal of ease in terms of usability. Moreover, they make cleaning and maintenance extremely easy.

The exibility of these tilt and turn windows allow you to open a window even in a small room for ventilation. While they allow an ample air w, at the same time the tilt prevents rain water from entering the house.



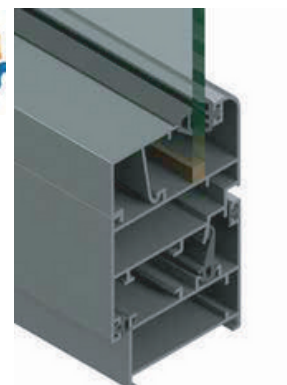
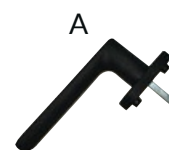
Disclaimer: Images shown are for representation purpose only

Tilt & Turn



Technical Specification

- ◆ Maximum Shutter Dimensions 760mmx 1500mm
- ◆ Single Glass Glazing option 6m and 8mm
- ◆ Double Glass Glazing option 22m and 24mm
- ◆ Three window operations in one; tilts & turns with a single lever
- ◆ Added security can be used as a fire or smoke escape window
- ◆ Draft-free ventilation , used in conference rooms and duct areas
- ◆ Hardware Options : A) Tilt & Turn Handle

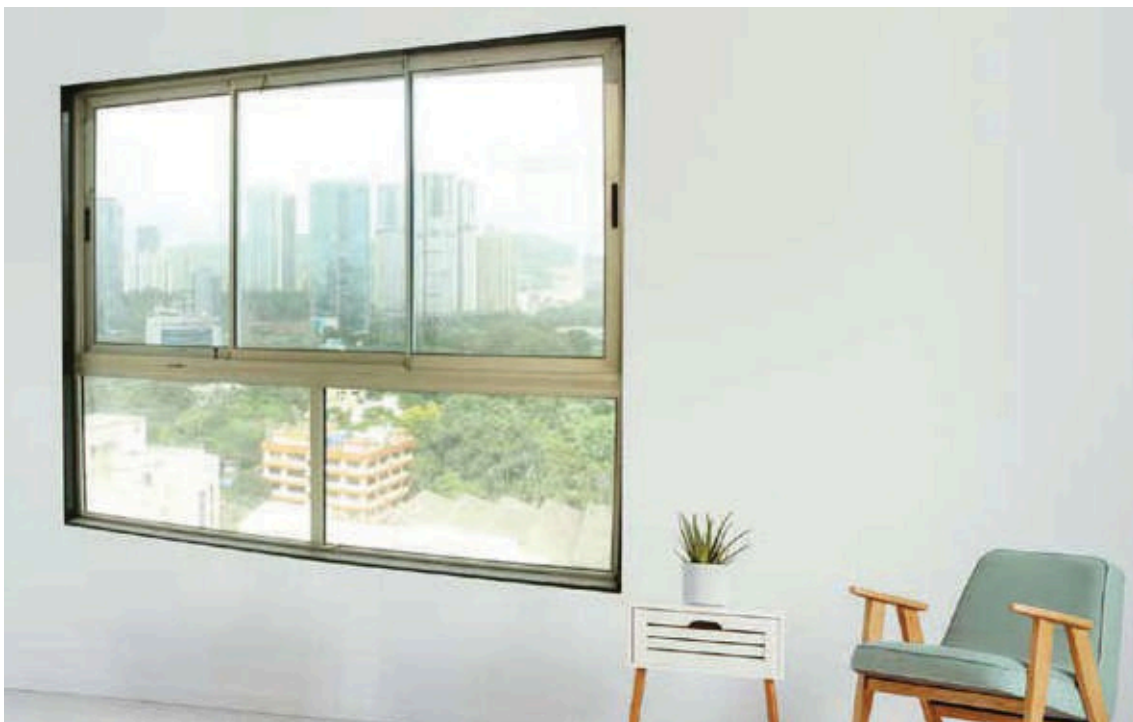


COMBINATION WINDOWS

Designed specially for high rise buildings with top sliding and bottom fixed windows, a combination window can serve as the focal point of your living room, dining room, or master bedroom. Whether you are looking to add more drama to your space or trying to go the other way with a classic look, combination windows are the right pick for you.

A sleeker and sturdier combination system helps the windows withstand gigantic wind loads. Special drainage ensures better of water during monsoons and the anti-capillary pad from the top fitted seals water and air.

Simply put, combination windows are a set of windows placed next to one another to provide you the best of both worlds.



Technical drawing of a window frame assembly, showing front, side, and detail views with dimensions and labels.

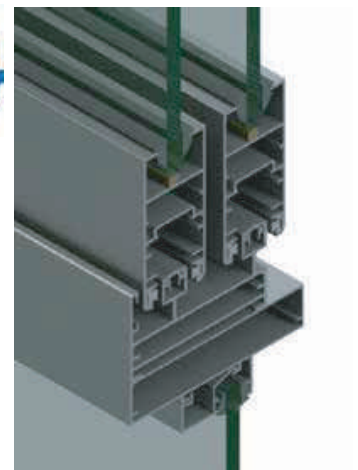
Front View: Shows a rectangular frame divided into four panes. The top panes are labeled 'F' and the bottom panes are labeled 'F'. Arrows indicate the opening direction.

Side View (Top): Shows the frame profile with dimensions: 33, 75, 33, 43, 65, 77. Labels 'OUTSIDE' and 'INSIDE' are present.

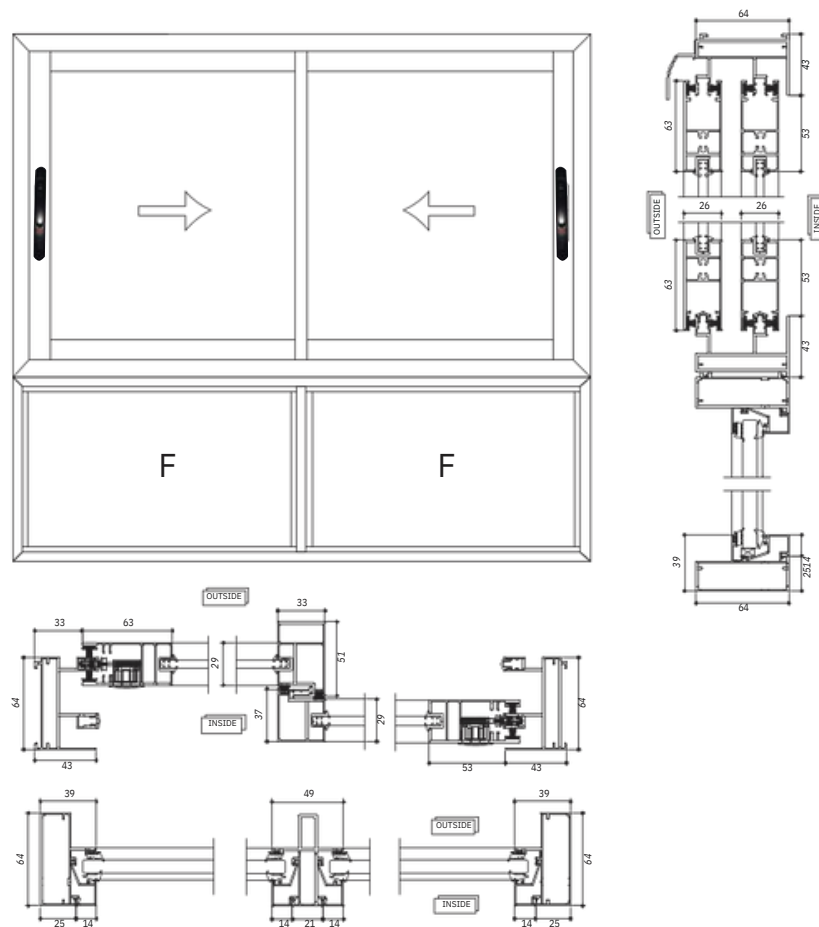
Side View (Bottom): Shows the frame profile with dimensions: 39, 33, 43, 21, 98, 2.4. Labels 'OUTSIDE' and 'INSIDE' are present.

Detail View (Top): Shows a cross-section of the frame with dimensions: 33, 75, 35, 42, 31, 65, 43, 77. Labels 'OUTSIDE' and 'INSIDE' are present.

Detail View (Bottom): Shows a cross-section of the frame with dimensions: 39, 54, 14, 25, 14, 39, 88. Labels 'OUTSIDE' and 'INSIDE' are present.

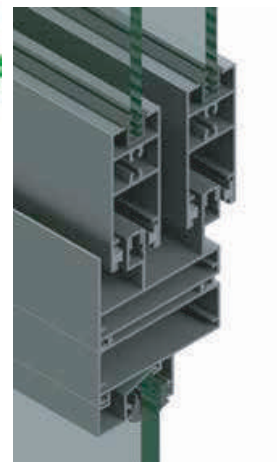
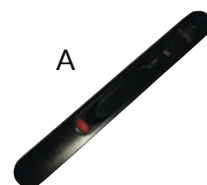


30x63MM Combination Guide Rail system

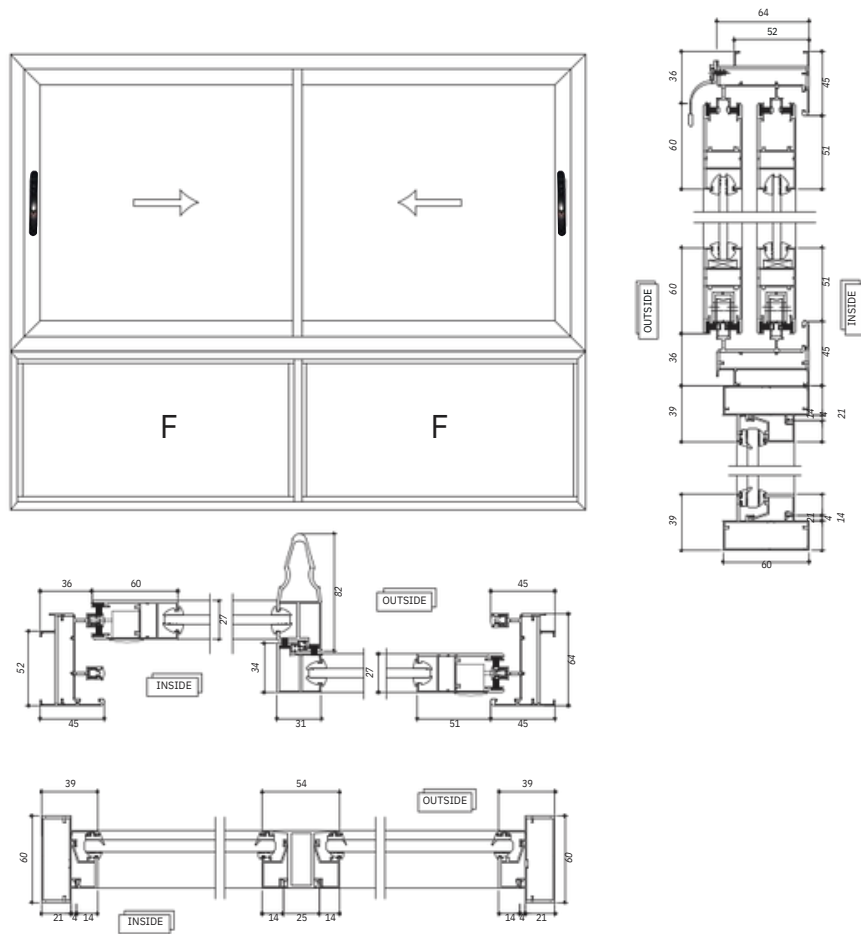


Technical Specification

- ◆ Physically tested system as per ASTM & AAMA standards
- ◆ 2 track & 3 track available
- ◆ Maximum shutter dimensions- 1500mm x 2250mm
- ◆ Maximum Glass thickness -8mm
- ◆ Shutter of Single glass available
- ◆ Slim Interlock re-inforcement upto 3.75KPa
- ◆ Anodized add-on rail to protect from damages caused by regular operations
- ◆ Special drainage for better outflow of water during monsoons
- ◆ Hardware Options : A) Concealed Lock Automatic

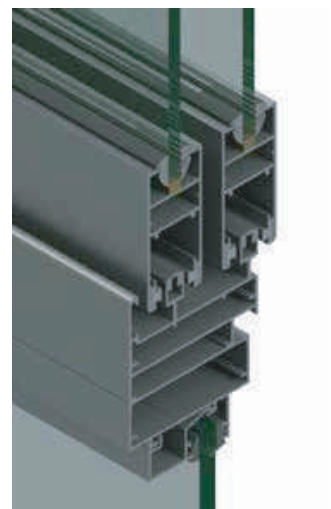
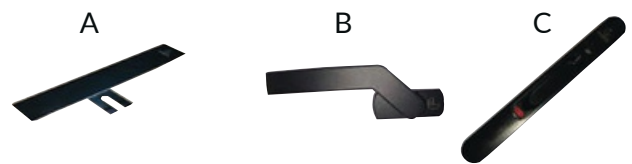


27x60MM Combination Guide Rail System

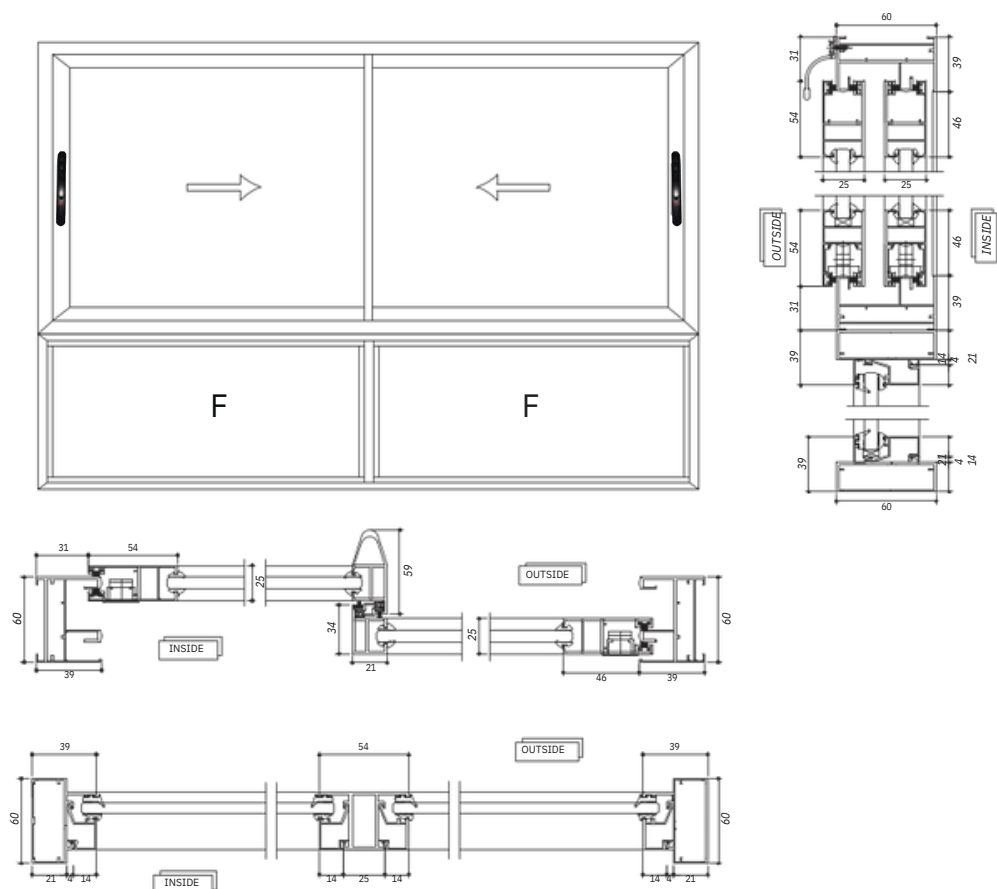


Technical Specification

- ◆ Maximum Shutter Dimensions 1200mm x 2200mm
- ◆ Maximum Glass Thickness 18mm
- ◆ Available in 2 track and 3 track
- ◆ Single Glass and Double Glass shutter available
- ◆ Single & Multipoint lock available
- ◆ Combination of Sliding & Fixed window
- ◆ Anodized add- on rail
- ◆ Handle section with reinforcement to withstand wind loads in high rises
- ◆ Special drainage for better outflow of water during monsoons
- ◆ Flymesh can be installed
- ◆ Hardware Options : A) Metro Handle
B) Short Neck Handle C) Concealed Lock Automatic

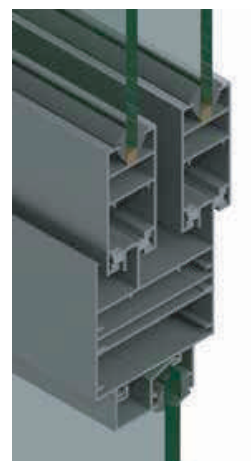
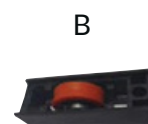
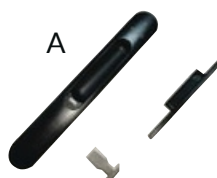


25x54mm Combination Window System

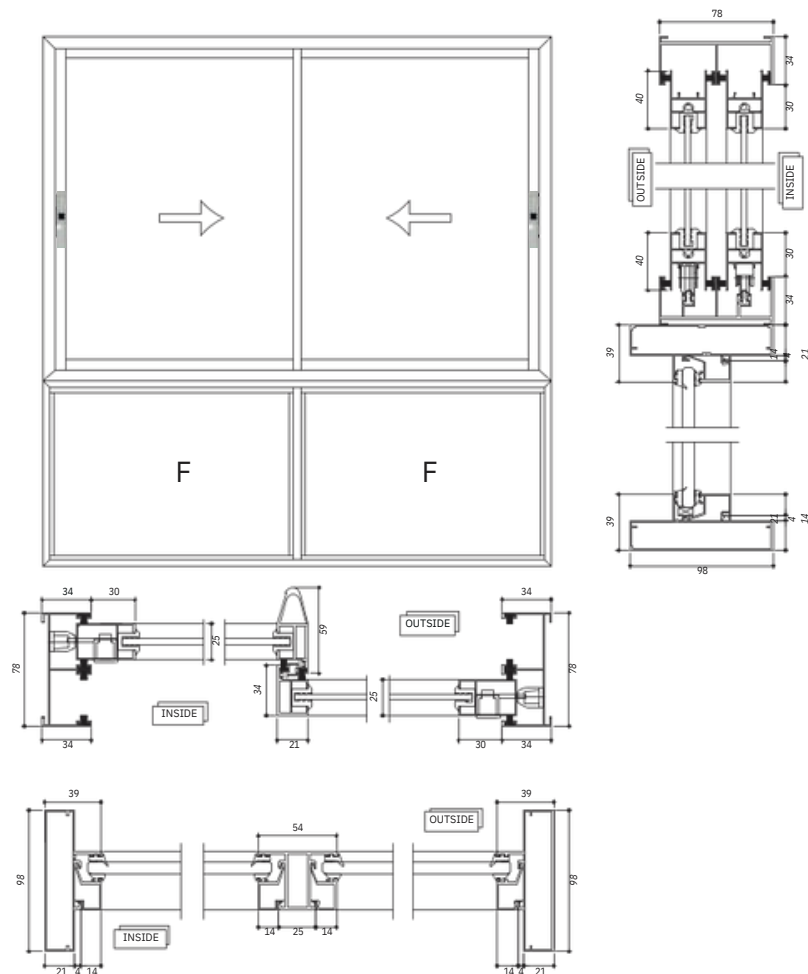


Technical Specification

- ◆ Maximum Shutter Dimensions 900mm x2000mm
- ◆ Maximum Glass Thickness 5mm/6mm
- ◆ Available in 2 track and 3 track
- ◆ Single Glass shutter available
- ◆ Combination of Sliding & Fixed window
- ◆ Anodized add- on rail
- ◆ Handle section with reinforcement to withstand wind loads in high rises
- ◆ Special drainage for better outflow of water during monsoons
- ◆ Flymesh can be installed
- ◆ Hardware Options : A) Concealed Lock B) Bearing



Ultra Value Window (UVW) Combination System



Technical Specification

- ◆ Sleeker Design
- ◆ Maximum Shutter Dimensions 900mmx1800mm
- ◆ Available in 2 track and 3 track
- ◆ Wind Load capacity upto 1.5Kpa.
- ◆ Optimum weight designed profiles
- ◆ Hardware design compatible with aluminium sections
- ◆ Concealed shutter option available
- ◆ Hardware Options : A) Concealed Lock
B) Bearing

